

**PROFESSIONAL  
CONSULTING SERVICES  
(PCS)**



**3505 Pebble Beach**

**Drive, Harlingen, Texas 78550**

**(956) 970-1414**

**[info@platinumconsultingservices.org](mailto:info@platinumconsultingservices.org)**

**[platinumconsultingservices.org](http://platinumconsultingservices.org)**



**PLATINUM  
CONSULTING SERVICES**  
"We Got This"

---

I wanted to introduce you to Platinum Consulting Services (PCS). PCS is a multi-service company that offers both grant writing services as well as a wide range of products, including Digital Hand Sanitizer Kiosks and State-Of-The-Art Interactive Flat Panels. By working with our company, we can provide your organization with the most effective equipment to impact your students' academics and health.

In order to obtain this equipment, we offer **FREE** grant writing services on technology equipment grants. In these grants we require a specific amount of technology products from our company be included in the budget. Therefore, you get products plus writing services for the price of one. If you are looking for products solely we do sell them individually as well and at great prices compared to buying them at other places.

Additionally, by going to the following link "<https://www.platinumconsultingservices.org/technology>" you can access Platinum Consulting Services' website where you may find the technology we provide as well as request quotes. By clicking on a product, you will find a video that demonstrates the equipment in action.

If you would like to hear more about our company or have any questions, please feel free to reach out to me via email [info@platinumconsultingservices.org](mailto:info@platinumconsultingservices.org) or phone number at (956) 365-4100.

Sincerely,

Alonzo Alaniz,

PCS President

# Slope

Slope-intercept form | Algebra I | Khan Academy

\* $y = 2x + 3$

Slope-intercept

x	y
0	3
1	5

$\Delta x = 1$   
 $\Delta y = 2$

$$y = mx + b$$





Part Numbers: CTI-6065K+UH20; CTI-6075K+UH20; CTI-6086K+UH20

# 6000K+ Series

## A New Kind of Collaboration

Clear Touch's newly released K+ Interactive Panel is groundbreaking educational technology aimed to simplify the process of remote, blended, and in-person learning.

Collaboration between teachers and students has never been easier.

Keep things stress-free with twenty points of touch and our content packed educational software. The K+ is faster with our quickest processor yet, brighter with a crisper image from all angles, and easier to install with a thinner body that's as tough as always.

## Why Choose our K+ Panel?



Ultra-fast Processor Speed



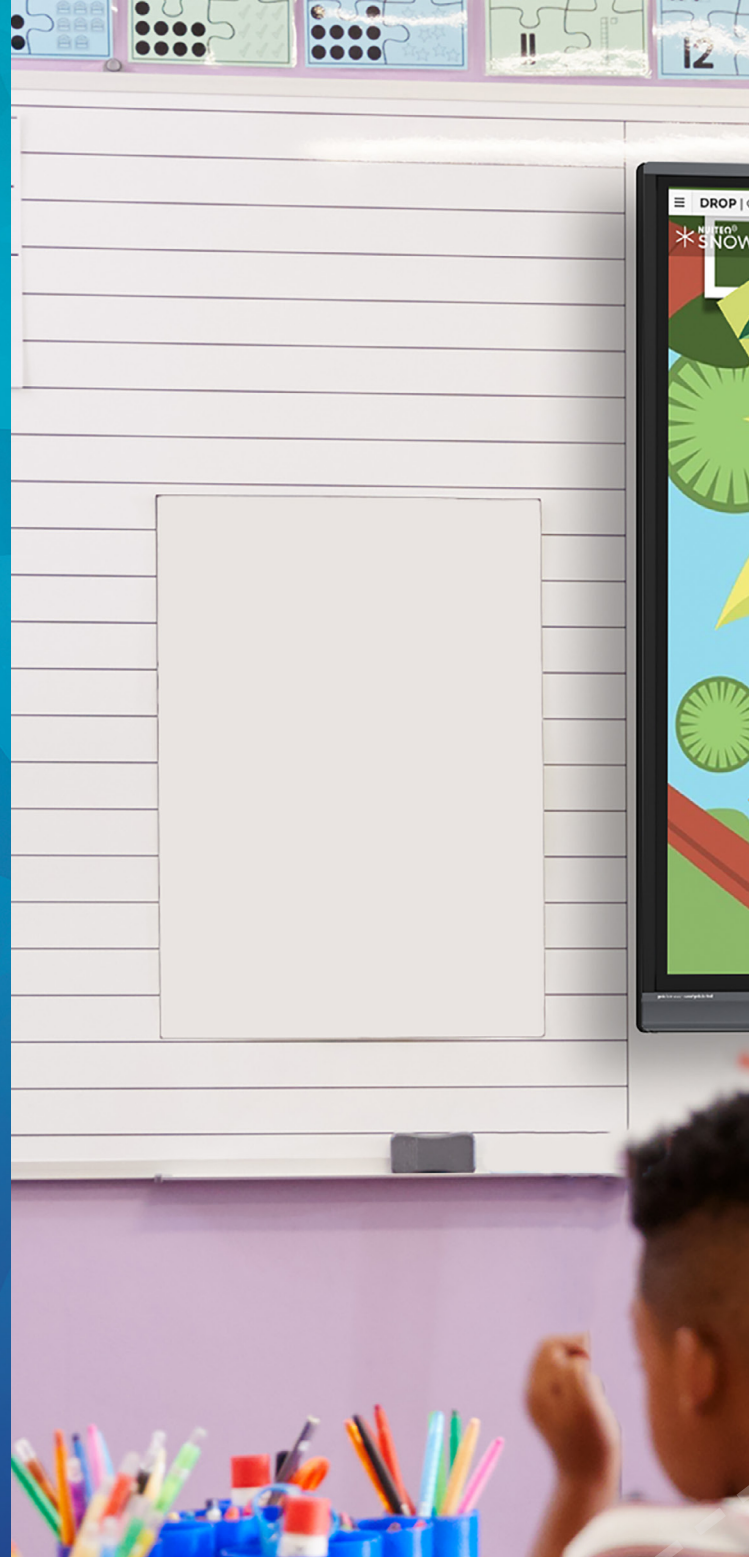
Built-in Sound Bar and Subwoofer



Dual Ethernet Port



USB-C (Audio, Video, Touch & Power)



Included WiFi Module





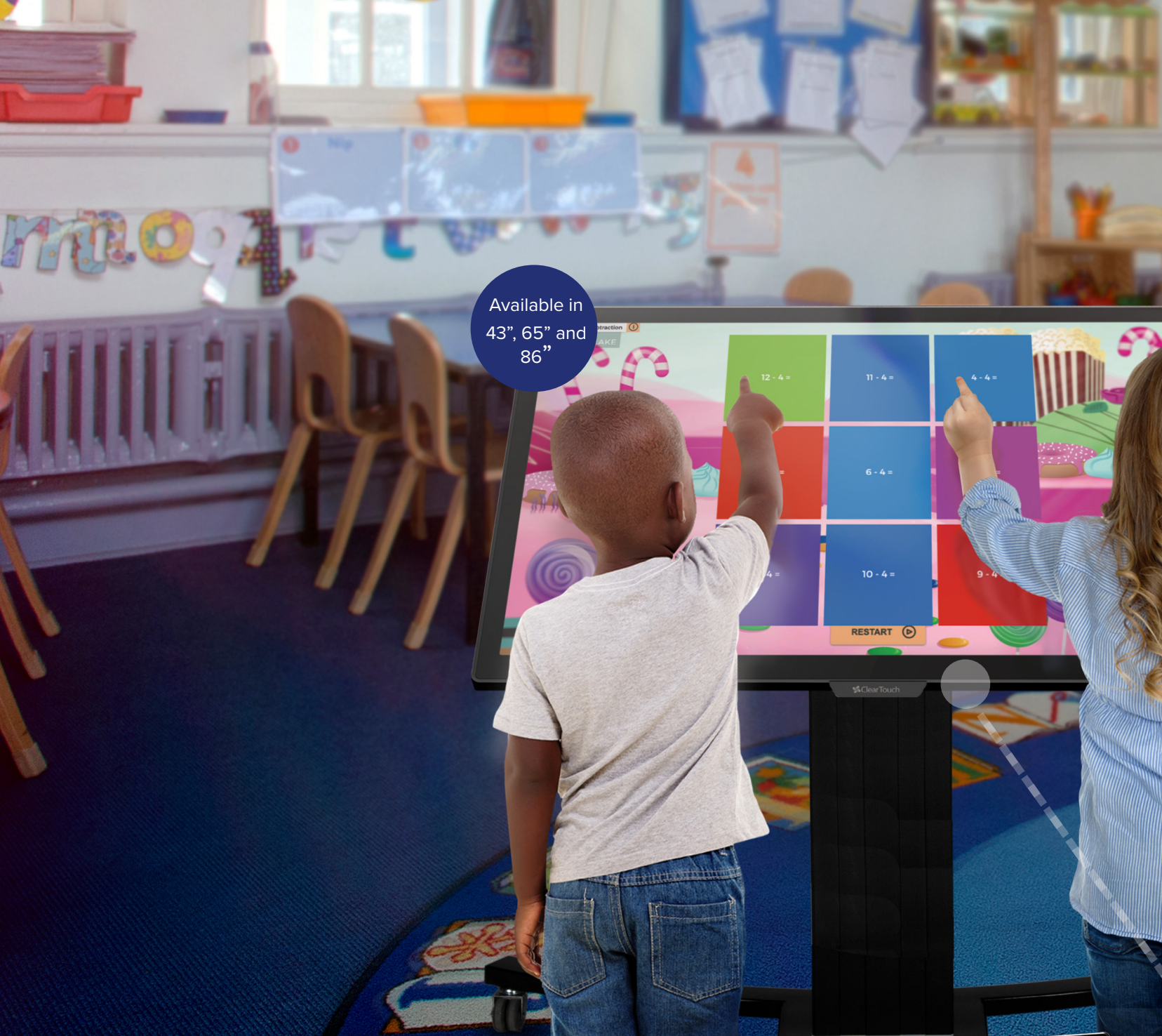
Available in  
65", 75" and  
86"

## Call it a packaged deal... find everything in the box!

The K+ Series includes a built-in soundbar and subwoofer, WiFi module, USB-C cable, and a wall mount with pre-installed brackets. This is the FIRST mass-produced infrared panel with a 2.1 soundbar and down-firing speakers, aimed to fill your classroom with a deep, rich sound. Say goodbye to challenging cable messes, the all-encompassing USB-C cable can do it all: audio, video, touch and power. This panel is available in 65", 75" and 86" sizing.



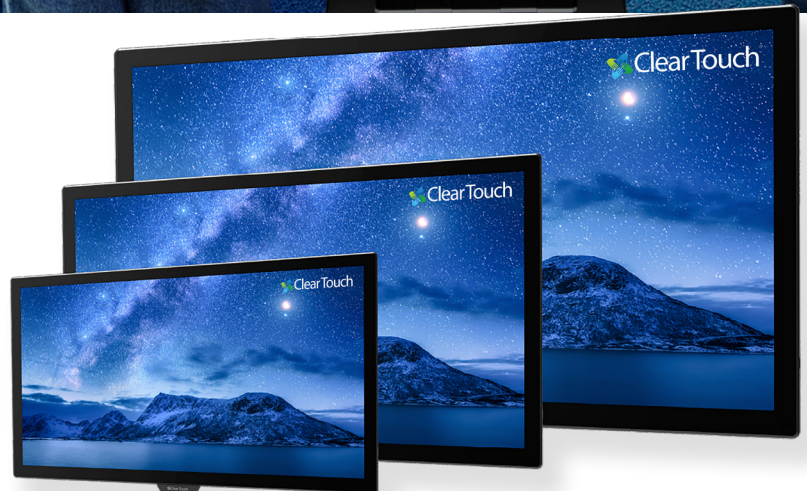




Available in  
43", 65" and  
86"

## Let us accommodate you!

This panel is available in 43", 65", and 86" sizing. The 43" option is compatible with our Mini Convertible Stand, enabling tabletop mode and safely tailoring to early learners. The 65" size is compatible with our Convertible Stand, enabling adjustable height and angle. Our free, integrated software is perfect for all types of learning environments for all ages, and each panel boasts Clear Touch Command for panel management with video broadcast and alert notifications.







## Collage

### [Creating a Connected Classroom](#)

Clear Touch® Collage software is an easy-to-use solution that encourages student involvement in an activity, even when they have their own devices.

Features include:

- Ability to screen cast up to six devices
- Compatible with Chromebooks, Mac, PC, Android and iOS
- Wireless touch control with Mac and PC
- Manage connected devices with permissions
- Seamless synchronized audio, video, touch, and scaling



## Snowflake ft. Canvas

### [In-Person Lesson Plans at your Fingertips](#)

Our Snowflake by NUI TEQ software creates engaging experiences for your students, available online or in-app. The software is integrated with leading SSO and LMS providers, making this a seamless addition to your classroom.

Features include:

- Built-in, interactive lesson activities
- Ability to split panel in up to four zones
- Online community with activities aligned to standards
- Integrated Canvas whiteboard software for note-taking and linking to multimedia





## Hybrid Learning

Teaching just got a rehaul.

Now more than ever, educational technology has reached a peak of importance in the classroom, and hybrid/remote learning has made its grand debut. Almost overnight, teachers who were trained to implement lesson plans to a physical room full of students have adapted to teach a remote or a blended group of students.

**That's where Clear Touch® comes in.** The time is now to begin using educational technology that is easily accessible, user-friendly, compatible with multiple learning styles, and dependable in all situations. This includes using products like the **Clear Touch® Webcam and Tripod Kit** to connect and collaborate with a hybrid classroom, and using software for lesson planning and interactive activities.



## Snow.Live ft. Canvas Online

Face Remote and Blended Learning Head-on

Snow.Live allows teachers and students to access lesson activities through their web browser and share them via email.

Features include:

- Ability to upload a classroom roster to send activities and monitor student progress
- Customizable lesson activities with at least one activity aligned to each common core standard
- Responsive whiteboarding software that's available to share for remote, hybrid, and in-person collaboration



# Command

You Have the Power

Time to take control. Command is a cloud-based software that grants IT departments and administrators the ability to communicate with every panel under their management.

Features include:

- Automatic event scheduling
- Comprehensive usage statistics and monitoring
- Mobile device and app management software
- Emergency notification tools
- Intuitive user interface
- Enhanced security

## Command Interface

Centrally Manage your Panels

Command acts as a digital decoder, saving \$300 per classroom by allowing teachers to stream approved channels directly onto the panel without expensive third-party hardware.

Tech directors can:

- Remotely manage all panels in the district
- Broadcast video to select panels.  
Example: Sharing a news station or school news broadcast
- Activate widespread communication
- Maximize device lifespan
- Remotely troubleshoot



# Professional Development

We won't drop off your Clear Touch® panel and leave you to figure out the rest.

Instead, we have an Implementation Team of former educators with **50+ combined years of experience in the classroom**. They understand your needs when it comes to technology, and care about setting you up for success. Our Implementation training will focus on not only how to use our products, but demonstrating how to apply it to your own personal teaching styles and initiatives.

Your satisfaction is the true measure of our success.

Our Implementation Team offers more than device training. They use the Always On Approach: On Site, Online, On Demand. They provide:

- Professional development workshops
- Free, pedagogy-focused online webinars
- In-depth video tutorials
- 24/7 access to free Clear Touch Academy courses







## What You Will Learn

In workshops and training sessions, our team focuses on:

- Adapting your tech to STEAM, STEM, and SPED curriculum
- Distance, blended, and in-person learning
- Workflow adaptation for all Clear Touch® software suites
- How to apply best practices and pedagogy
- Trainer certification classes to build capacity within school districts (training an in-house Clear Touch Specialist)



**"We had a few in-service days where a Clear Touch trainer came in... teachers did not leave without knowing what to do. He helped them not feel scared of the panel, and encouraged them to use it however they wanted."**

– Dena McCord, Elementary Principal at AISD



# Support

Don't just take our word for it, it's all in the numbers.

Our Support Team is locally based in Greenville, South Carolina, and can be reached by phone, chat, ticket, or view product documentation online. You won't have to worry about being on hold for hours or talking circles around your problem, this crew is truly here to help.

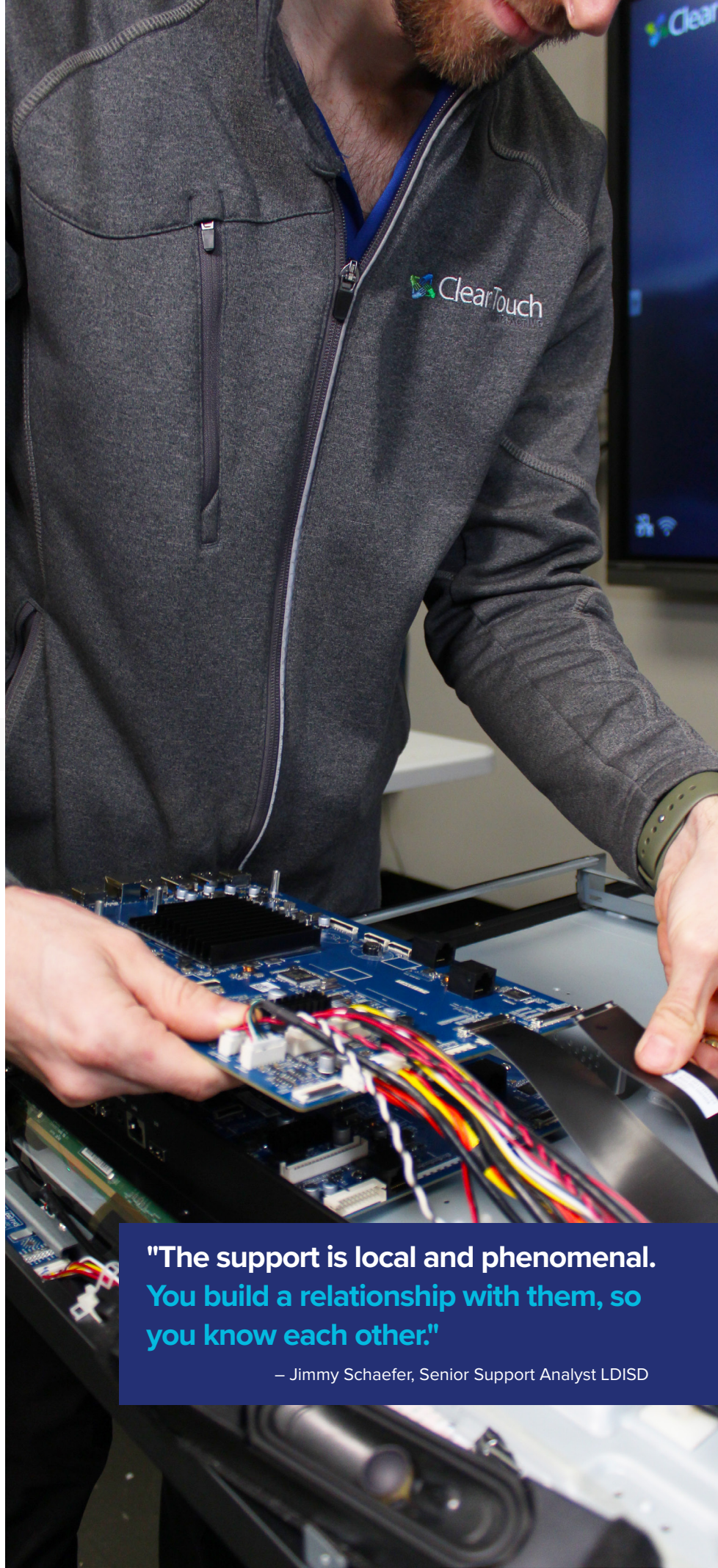
## Our Stats

**98%** Support Line Answer Rate

**< 1%** DOA Rate

**97%** Positive Customer Feedback

**Clear Touch® will repair any defect in materials or workmanship in a defective product during your warranty period.** In the event of a product failure, we will ship out a replacement ahead of time and recover the original product afterward, (covering all shipping costs). Warranty periods will vary based on the specific product.



**"The support is local and phenomenal. You build a relationship with them, so you know each other."**

– Jimmy Schaefer, Senior Support Analyst LDISD



# Simple Solutions, Stunning Clarity.

**Surprise! There's more.**

So, your target audience will see thousands of messages today. But will they see yours? Time to make that happen.

Clear Digital® is the sister company of Clear Touch®, created to help you communicate with your audience with stunning clarity. We design digital display solutions to help businesses cut through the chaos and deliver messages with style.

[www.getcleardigital.com](http://www.getcleardigital.com)





# Accessories



CTS-DC110-WFHD

## Document Camera

Teach from a New Angle

Say goodbye to presentation problems! The wireless Clear Touch® Document Camera is the perfect addition to any teacher's toolbox with:

- Built-in connectivity and Clear Touch Canvas software
- Crystal-clear audio and LED lighting
- Multi-directional neck



CTS-KB100-WF24

## Wireless Keyboard

Control from a Distance

Take the power into your own hands! Our keyboard and trackpad enables users to present from distances of up to 30 feet with:

- Seamless connection with 2.4 GHz wireless connectivity
- A full QWERTY keyboard and trackpad
- USB adapter and rechargeable battery



CTI-PCMOD-PC55-ST

## PC Module

Two Words: Seamless Connection

We've got just the thing to take your panel experience to the next level. We offer three cordless PC modules, each including:

- Ultra HD 4K display
- High-speed storage and memory
- Powerful processing



CTS-HS100-UBLK

## Headset ●

Sound Just Met a New Companion

Sometimes, it's best to tune the world out and tune in to work, online classes, and virtual meetings with:

- In-line audio control and muting
- Braided USB cord for extra strength
- Durable and flexible design

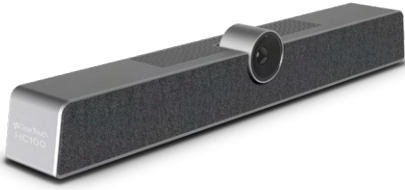
CTS-HC100-UHDA

## Huddle Camera ●

### Raising the Bar

Who says you have to change out of your pajama pants for a conference call?

- Wide-angle 4K webcam
- Crystal-clear audio with high-fidelity speakers and beamforming microphone array
- Compatibility with all Clear Touch panels and video conferencing applications
- Built-in controls with no extra software needed



CTS-WC110-UHHD; CTS-WCKIT-DTRI

## Web Camera and Tripod Kit ●

### Teach and Meet with Ease

In this case, two is better than one. The Clear Touch® Web Camera and Tripod Kit extends the capabilities of your current technology.

- Tripod is compatible with web cameras, cell phones, and more
- Webcam has a built-in microphone with 84 degree FOV
- Webcam has a USB 2.0 interface; including power, video, and audio all-in-one

*\*Tripod Kit and Webcam sold separately*



Headset

Huddle Camera

Web Camera and Tripod Kit

# Stands and Mounts



CTI-STAND-MINC

## Mini Convertible

Small but Mighty

Early learning, meet your new best friend.

**Compatible:** 7000XE Series Panels

**Adjustable:** Height and angle

**Motor:** Electrical powered with anti-collision sensor and precision lift

**Mobile:** C-shaped base



CTI-STAND-CONM-V3

## The Original Convertible

Adjustments Made Easy

Great news! This stand will make your life so much easier.

**Compatible:** 7000XE Series Panels

**Adjustable:** Height and angle

**Motor:** Electrical powered with anti-collision sensor and precision lift

**Mobile:** C-shaped base



CTI-STAND-ADJM-V4

## Adjustable Mobile V4

A Stand for Every Level

Inclusivity? The perfect solution for all ages.

**Compatible:** 7000XE & 6000K+ Series Panels

**Adjustable:** Height (over 27" range for pre-K through adulthood)

**Motor:** Electrical powered with anti-collision sensor and precision lift

**Integrated:** VESA pattern Mount for PC, cable management, power strip mounting, & security features





CTI-STAND-FIXM

## Fixed Mobile V3

Strong and Sturdy

Has this stand been working out? Consider us impressed.

**Compatible:** 7000XE & 6000K+ Series Panels

**Support:** Supports up to 300 lbs

**Mobile:** C-shaped base



CTI-MOUNT-ADJW-V4

## Adjustable Wall Mount V4

Simple yet Effective

Sometimes in education; the simpler, the better.

**Compatible:** 7000XE & 6000K+ Series Panels

**Adjustable:** Height (27" range for pre-K through adulthood)

**Motor:** Electrical powered with anti-collision sensor and precision lift



CTI-MOUNT-FIXW-V3

## Standard Wall Mount

The Original Way to Display

This product's original design has been with us through it all.

**Compatible:** 7000XE & 6000K+ Series Panels

**Support:** Supports up to 300 lbs

**Included:** With the purchase of any Clear Touch Panel